

► Automatic Busbar Loading Machine

CNCLK40

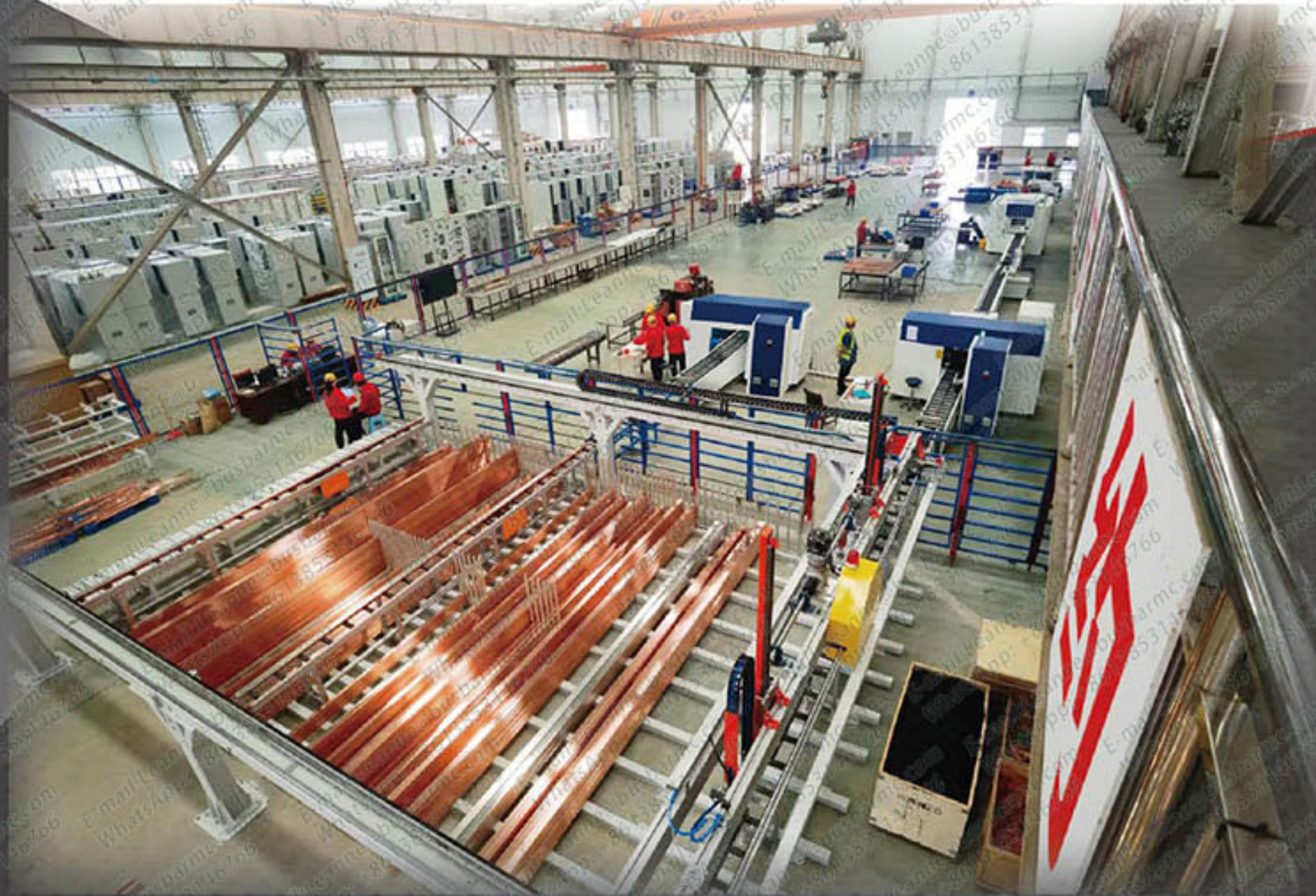
母排自动上料设备

Functions

The automatic feeding equipment for busbars, integrated with our self-developed HQ600 series busbar punching and shearing machines, enables automated copper busbar processing. Its advantages lie in enhancing the level of automation, reducing labor intensity, minimizing waste caused by manual feeding errors, and improving production efficiency.

Features

- The facility includes a sorting and unpacking area, manual stacking area, inventory storage, and a feeding zone for punching and shearing, all arranged in an efficient layout.
- Reserved areas for bending and arc milling processes are included, with the overall layout being square, rational, and space-efficient.



Automatic Production Line Options

	402K	602K	Laser	CNCDMN-200A
CNCLK40	●	/	●	●
CNC Loading System	●	/	/	●
	●	/	●	/
	/	●	●	●
	/	●	●	/
	/	●	/	●

Technical Parameters

序号(No)	Copper Busbar Width(mm)	Number of storage compartments
1	30	6
2	40	7
3	50	6
4	60	6
5	80	6
6	100	6
7	125	5
		42

Accessories Selection

序号(No)	名称(Name)	数量(Quantity)	品牌(Brand)
1	Controller	1 sets	Beckhoff
2	Servo Motor	2 sets	Rexroth
3	Pneumatic Component	1 sets	Airtac
4	Ball screw	1 sets	Taiwan TBI
5	Linear Guide	1 sets	Shangyin Taiwan
6	Low voltage electrical appliance	1 sets	Siemens
7	Display	1 sets	Qi Yang